

Eastern Great Lakes Innovative Users Group Conference
September 25, 2009
Akron, OH

Demystifying License Mapping

ERM and the Promise of ONIX-PL

Deberah England, Wright State University
Christine Stamison, Swets Information Services



Mystify

Verb

- **Utterly bewilder or perplex (someone)**

Maladies that have mystified and alarmed researchers for over a decade

- **Make obscure or mysterious**

Lawyers who mystify the legal system so that laymen find it unintelligible

The Problem with Licensing

- 'Legalize' requires specialized knowledge
- Contain permissions, prohibitions, etc. that require library to notify users of said permissions & prohibitions etc. to be in compliance
- Consortial license information not easily accessible to members
- Communicating changes in agreements is difficult
- License workflow is time consuming!

Why libraries are not in compliance

- Not enough time to handle license workflow
- Not enough expertise to handle license workflow
- License bogged down in “legal” department
- License terms are stored in a filing cabinet & inaccessible to those who need to know terms
- Notifying public staff & users of permissions, prohibitions, etc. is difficult

The Result...

- ILL & Course reserve staff who are unaware of permissions & prohibitions, etc.
- Users are unaware of permissions & prohibitions, etc.
- If public services staff have access to a digitized copy of the license agreement – do you really want them interpreting it?
- Fear of legal action

The impact on publishers

- Getting information across to end user
- License workflows are costly
- Fear of abuse
- Abuse may impact their bottom line

*Not all publishers are the wealthy Big Four.
Some society publishers are scrambling to stay afloat.*

**Important to all in the
e-resources supply chain**

Lifting the veil...

License Mapping

Joint License Expression Working Group (LEWG)

- Joint NISO/EDItEUR/DLF-ERMI/PLS Group
- Developed a mapping of ERMI terms to ONIX-PL
- Goal to promote use of standard license expression
- Trisha Davis & Diane Grover charged with developing & presenting workshops (See *Davis & Grover*)

ERMI Terms of use

- Authorized User Definition
- Local Authorized User Definition Indicator
- Fair Use Clause Indicator
- All Rights Reserved Indicator
- Database Protection Override Clause Indicator
- Citation Requirement Detail
- Digitally Copy
- Print Copy
- Scholarly Sharing
- Distance Education
- Interlibrary Loan Print or Fax
- Interlibrary Loan Secure Electronic Transmission
- Interlibrary Loan Electronic
- Course Reserve Print
- Course Reserve Electronic / Cached Copy
- Electronic Link
- Course Pack Print
- Course Pack Electronic
- Remote Access
- Concurrent Users
- Pooled Concurrent Users
- Other Use Restriction Note

Encoding

- Permitted (explicit)
- Prohibited (explicit)
- Permitted (interpreted)
- Prohibited (interpreted)
- Silent (no interpretation)
- Not applicable

Mystic streets of blue

- Publishers have licenses
- Vendors developed license banks
- Libraries have ERMs
- What is needed is a quick electronic method to input data into ERMs

Demystified...

ONIX-PL *to the rescue*

ONIX-PL to the rescue

What is ONIX-PL?

- ONline Information eXchange – Publisher Licences
- Part of the larger group of ONIX for Serials
 - XML standards for data exchange between agents, publishers and Electronic Resource Management (ERM) systems
- Developed by EDItEUR, librarians, consortia, publishers, ILS, and members of the License Expression Working Group (LEWG)
- Standard way of communicating the terms of a license in a machine readable format
- A tool to make licensing terms and conditions more accessible

ONIX-PL to the rescue

What ONIX-PL is not

- ONIX-PL is not a Rights Expression Language
- It is not designed to prevent/enable access to a piece of digital content
- While it can express the content of a license, it is not a license
- A complete ONIX-PL record isn't required
- OPEN to interpretation

ONIX-PL to the rescue

Available and Ready to Use

- ONIX-PL format specification v1.0
 - Schema released in November of 2008
 - See resource handout for URL
- ONIX-PL Dictionary Issue 1 released
- OPLE (ONIX-PL Editor) Editing tools launched
 - Later in the presentation

ONIX-PL to the rescue

Who is Using it?

- JISC (Joint Information Systems Community) - Requiring XML expressions of 80+ licenses
 - Near uniform agreement in survey of benefits
- Publishers Licensing Society (PLS) in UK
 - IOPP and other publishers are letting PLS encode licenses on their behalf
- Nature has a template license and deriving other variants of their licenses
- Springer, Elsevier, OUP and other working with SCELC on pilot using Serials Solutions
 - Goal is to have at least 5 publisher implementations by years end
- Swets can download license information from its SwetsWise License Bank into ONIX-PL

ONIX-PL to the Rescue

the world's becoming
swetswise



Steve Douglas, [Logout](#) | [My Profile](#) | [Help](#) | [Your Cart](#)

[Home](#) [Search & Order](#) [Subscriptions](#) [Claims](#) [Reports](#) [Account](#)

License Details Report

This report provides you with the detailed information on all the licenses held in your account. You can use this information to populate your local ERM system.

Basic Selection Options

license 12 selected

select licenses [licenses](#)

Output Options

format

Scheduling Options

do you wish to schedule this report

[request report](#) [other report](#)

ONIX-PL to the Rescue

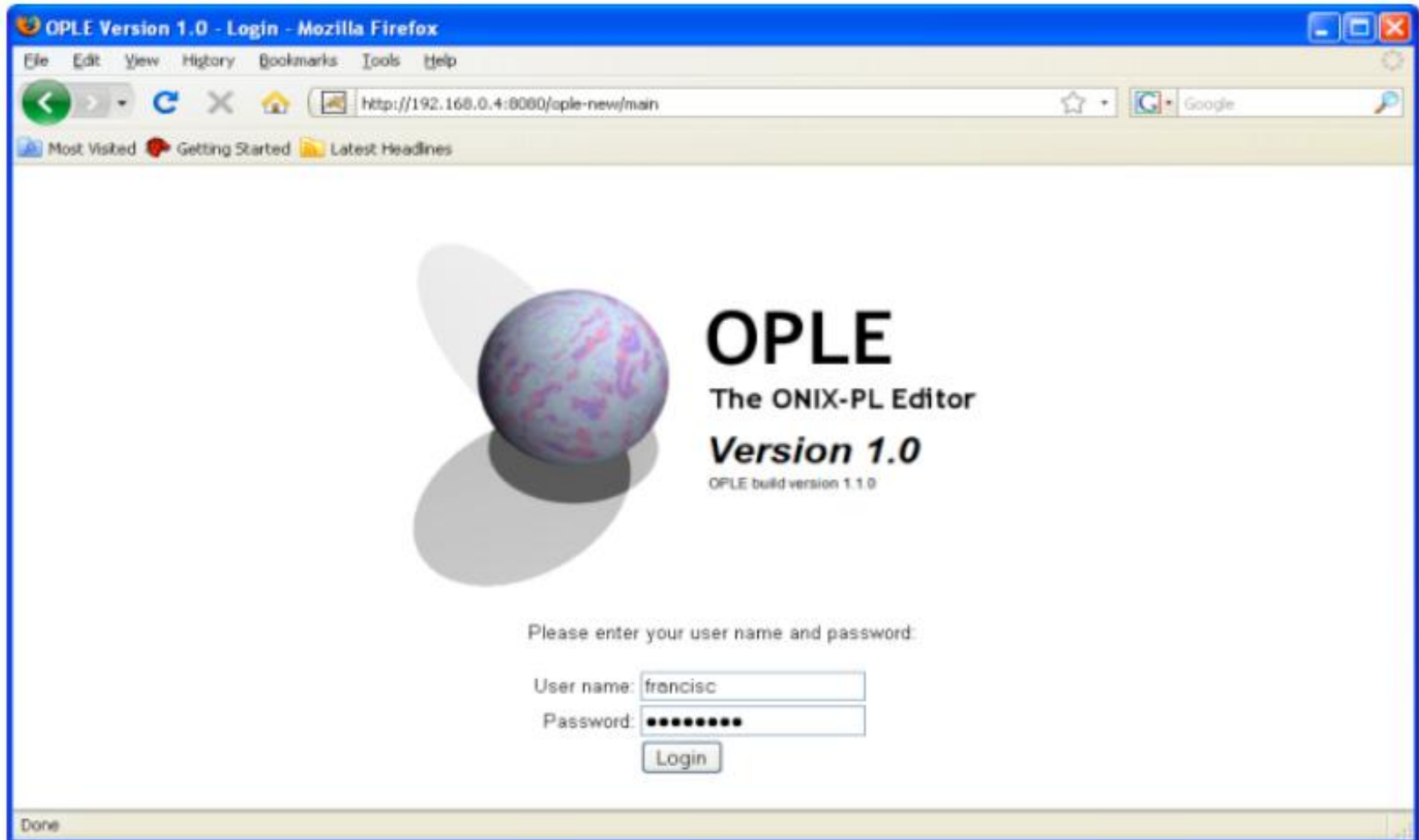
```
<?xml version="1.0" encoding="UTF-8" standalone="yes" ?> <!-- Inbound Message -->
<ns:getLicensesDetailsResponse xmlns:ns="http://licenses.ws.wise.swets.nl/xsd"
xmlns:soapenv="http://schemas.xmlsoap.org/soap/envelope/">
<ns:return
<ns:answerFlag xmlns:ns="http://dto.licensebank.shop.wise.swets.nl/xsd">0</ns:answerFlag>
<ns:licenseDetailsList xmlns:ns="http://dto.licensebank.shop.wise.swets.nl/xsd">
<ns:adminAccountProviderSite>
<ns:codeAsString xmlns:ns="http://enums.common.wise.swets.nl/xsd">2</ns:codeAsString>
</ns:adminAccountProviderSite>
<ns:adminUrl />
<ns:annualRegistration>true</ns:annualRegistration>
<ns:backYearAccessFrom>1997</ns:backYearAccessFrom>
<ns:combineOrdersAccessRequests>false</ns:combineOrdersAccessRequests>
<ns:crossAccess>0</ns:crossAccess>
<ns:customStatusLabel />
<ns:digitalCopyTermNode>Users may save the PDFs on their hard drive for their own personal use, but may not copy them for others
or for re-use by anyone else</ns:digitalCopyTermNode>
<ns:downgradeAcceptedMonths>0</ns:downgradeAcceptedMonths>
<ns:electronicLink>0</ns:electronicLink>
<ns:electronicReferenceMask />
<ns:embargoPeriodDays>0</ns:embargoPeriodDays>
<ns:extraAuthentication>3</ns:extraAuthentication>
<ns:hostingTypeFullTextAccess>3</ns:hostingTypeFullTextAccess>
<ns:ipRegistratioMethod>0</ns:ipRegistratioMethod>
<ns:licenseEndDateReminder>0</ns:licenseEndDateReminder>
<ns:licenseEndDateReminderDays>0</ns:licenseEndDateReminderDays>
<ns:noOnlineFirst>0</ns:noOnlineFirst>
<ns:onlineFirst>0</ns:onlineFirst>
```

ONIX-PL to the rescue

OPLE – How Does it Work?

- Developed by EDItEUR with support of JISC
 - Open source, web-based software package for creating, editing and managing license expressions using ONIX-PL
 - Developed primarily for use by publishers, libraries and intermediaries in the management of licensing the use of published content, especially online.
 - May be installed and used as a stand-alone system, but it may also be adapted to function as a component within a larger system, such as a library's resource management system or publisher's license management system.

OPLE Version 1.0 –Log In Page




OPLÉ Version 1.0 – Browsing Templates

OPLÉ - Browse templates - Mozilla Firefox

File Edit View History Bookmarks Tools Help

http://192.168.0.4:8080/ople-new/browse?view=templates

Most Visited Getting Started Latest Headlines

 **OPLÉ**
The ONIX-PL Editor
Version 1.0

Logged in as: francisc

Main Menu > Browse

Browse templates

- Template properties
- Import template in ONIX-PL format
- Create empty template
- Show categories ALL

Template name	Actions
JISC ACS 080905	full view summary view edit derive new template derive new license expression validate and export ONIX-PL
XYZ JISC 080905	full view summary view edit derive new template derive new license expression validate and export ONIX-PL
new-1	full view summary view edit derive new template derive new license expression validate and export ONIX-PL
test-1	full view summary view edit derive new template derive new license expression validate and export ONIX-PL

Done

OPLE Version 1.0 – Data Input

HRAF Ethnography Save Cancel

- License Details
 - General Info
 - Resources (1)
 - Terms
 - Values**
 - Display In Settings

Fair Use Clause Indicator Present ▾

Database Protection Override Clause Indicator Absent ▾

All Rights Reserved Indicator Absent ▾

Citation Requirement Detail

Digitally Copy Permitted ▾

Digitally Copy Note AUTHORIZED USERS AND USE FOR eHRAF 2, par.4: "1"

Print Copy Permitted ▾

Print Copy Note AUTHORIZED USERS AND USE FOR eHRAF 2, par.5: "1"

Scholarly Sharing Silent ▾

Scholarly Sharing Note

Distance Learning Silent ▾

Distance Learning Note

ILL Print or Fax Prohibited ▾

ILL Secure Electronic Prohibited ▾

ILL Electronic (email) Prohibited ▾

ILL Record Keeping

ILL Record Keeping Note AUTHORIZED USERS AND USE FOR eHRAF 2, par.11: "

OPLE Version 1.0 – Edit Record

OPLE - Edit template component - "XYZ JISC 080905" - Usage [1] - Mozilla Firefox

File Edit View History Bookmarks Tools Help

http://192.168.0.4:8080/ople-new/xforms-server-submit

Most Visited Getting Started Latest Headlines

Usage Type - This is a required instance.
Initial / fixed value: **Make Temporary Digital Copy**

Usage Status - This is a required instance.
Initial / fixed value: **Permitted**

Authority
Add an instance

Annotation
Add an instance

License Text Link: [1] - This is a removable instance. Remove
Close this instance

Sort number reference (in document "License"): **3.1.1**

License Text Link

Done

[The Licensee may] make such local temporary copies of the Licensed Material as are necessary to ensure efficient use of the Licensed Material by Authorised Users, provided that such use is subject to all the terms and conditions of this Licence and does not result in the making available to Authorised Users of duplicate copies of the Licensed Material;

OPLD Version 1.0– Full Record View

Usage Terms [Edit](#) [Go to top](#)

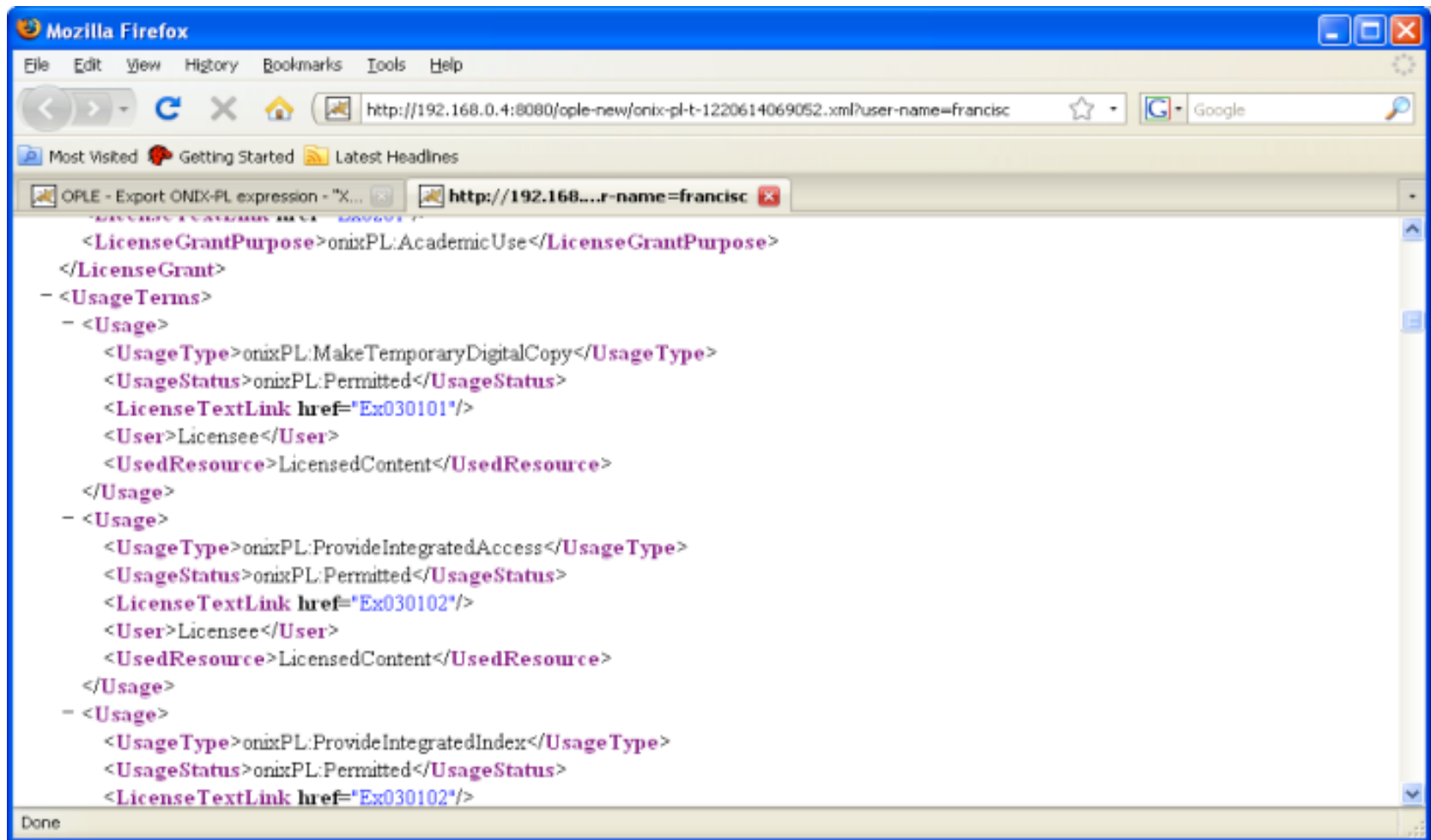
[1]: **Make Temporary Digital Copy**
Usage Status Permitted
License Section 3.1.1 [The Licensee may.] make such local temporary copies of the Licensed Material as are necessary to ensure efficient use of the Licensed Material by Authorised Users, provided that such use is subject to all the terms and conditions of this Licence and does not result in the making available to Authorised Users of duplicate copies of the Licensed Material;
User Licensee
Used Resource LicensedContent

[2]: **Provide Integrated Access**
Usage Status Permitted
License Section 3.1.2 [The Licensee may.] provide Authorised Users with integrated access and an integrated article author, article title and keyword index to the Licensed Material and all other similar material licensed from other publishers;
User Licensee
Used Resource LicensedContent

[3]: **Provide Integrated Index**
Usage Status Permitted
License Section 3.1.2 [The Licensee may.] provide Authorised Users with integrated access and an integrated article author, article title and keyword index to the Licensed Material and all other similar material licensed from other publishers;
User Licensee

Done

ONIX-PL Result



The screenshot shows a Mozilla Firefox browser window displaying XML data. The address bar shows the URL: `http://192.168.0.4:8080/ople-new/onix-pl-t-1220614069052.xml?user-name=francisc`. The browser's status bar at the bottom indicates "Done".

```
<LicenseGrantPurpose>onixPL:AcademicUse</LicenseGrantPurpose>
</LicenseGrant>
- <UsageTerms>
  - <Usage>
    <UsageType>onixPL:MakeTemporaryDigitalCopy</UsageType>
    <UsageStatus>onixPL:Permitted</UsageStatus>
    <LicenseTextLink href="Ex030101"/>
    <User>Licensee</User>
    <UsedResource>LicensedContent</UsedResource>
  </Usage>
  - <Usage>
    <UsageType>onixPL:ProvideIntegratedAccess</UsageType>
    <UsageStatus>onixPL:Permitted</UsageStatus>
    <LicenseTextLink href="Ex030102"/>
    <User>Licensee</User>
    <UsedResource>LicensedContent</UsedResource>
  </Usage>
  - <Usage>
    <UsageType>onixPL:ProvideIntegratedIndex</UsageType>
    <UsageStatus>onixPL:Permitted</UsageStatus>
    <LicenseTextLink href="Ex030102"/>
```

Challenges ahead

Publishers

- Additional staff for encoding
- Personnel with legal expertise to interpret license

Agents

- Need to map systems to download license data into ONIX-PL
- Additional mapping may be required with different ERM vendors

ERM Vendors

- Potential need for customization
- Highly complex licenses – negotiated terms – not all generic

Stars shine upon you...

Who benefits?

Value to publishers

- Helps library comply with licensing terms
- Fewer ambiguities

Value to agents

- Using this standard in our management tools to automatically populate new license agreements
- Time savings for customer

Value to ERM

- Provide seamless method of populating licensing terms and conditions for client base

Who benefits?

Value to Libraries (for ERLs)

- Ingest information into ERM systems much more easily
- Free up time spent on
 - license mapping
 - keying license data into ERMs
 - interpreting terms for public staff
- Quicker and easier to identify key terms subject to negotiation
- Better, faster, and easier negotiation based on clearer understandings, *perhaps*
- Possibility of more standardized licenses with standardized terms

Who benefits?

Value to Libraries

- Improved workflows
- Increased awareness of terms
- Easier to share terms with public staff and users
- Improved compliance with terms
- Clarity (if desired) about what is in a license
- Potential to keep an audit copy

Who benefits?

Universally acceptable standard for
formatting & delivering license
information for all parties:

***publishers, agents, consortia,
libraries and users***

**Make every license
come alive...**

In the meantime...

Get your ERM ready

- Review ONIX-PL encoding
- Code or re-code ERM license fields
- Create a basic ONIX-PL template
- Create a “license source” field to attribute source of license data
- Create an “interpretation by” note to attribute source of interpretation
- Prepare loader

In the meantime...

- Explore your sources - which providers are ready, near ready or are on board with ONIX-PL
- Set a policy for which licenses you'll accept from what sources
(e.g. journal licenses from sub vendor; database license from consortia or publisher, etc.)
- Establish workflow for ONIX-PL loaded licenses & non-ONIX-PL licenses
- Establish procedures to flag key terms you may want to negotiate
- Mark up & map existing licenses
(see Ruth and Grover)

Next steps

- Getting the word out
- Education
- JISC-funded initiative to create a repository of e-resource licenses
- Getting publishers on board
- Getting ERM vendors on board
- ***LET THEM KNOW!***

I find the great thing in this world is not so much where we stand, as in what direction we are moving: to reach the port of heaven, we must sail sometimes with the wind and sometimes against it—but we must sail, and not drift, nor lie at ..

- Oliver Wendell Holmes

Questions?

Deberah England

Electronic Resources Librarian
Wright State University
deberah.english@wright.edu

Christine Stamison

Senior Customer Relations Manager
Swets Information Services
cstamison@us.swets.com

Mystify

Words & music by Andrew Farriss and Michael Hutchence
Performed by INXS